



## 17 Auberge Close Raymond Terrace NSW

3  1  1 

Another great offering for the 1st home buyer or investor. Set in a house proud cul-de-sac in the Lakeside Estate the property features:

- \* 3 bedrooms all with built-ins
- \* Combined living and dining area
- \* Open planned kitchen
- \* Tiles to all living areas
- \* Separate toilet
- \* Single detached garage
- \* Fully insulated Queenslander room approximately 7m x 3m and tiled
- \* Generous sized level yard

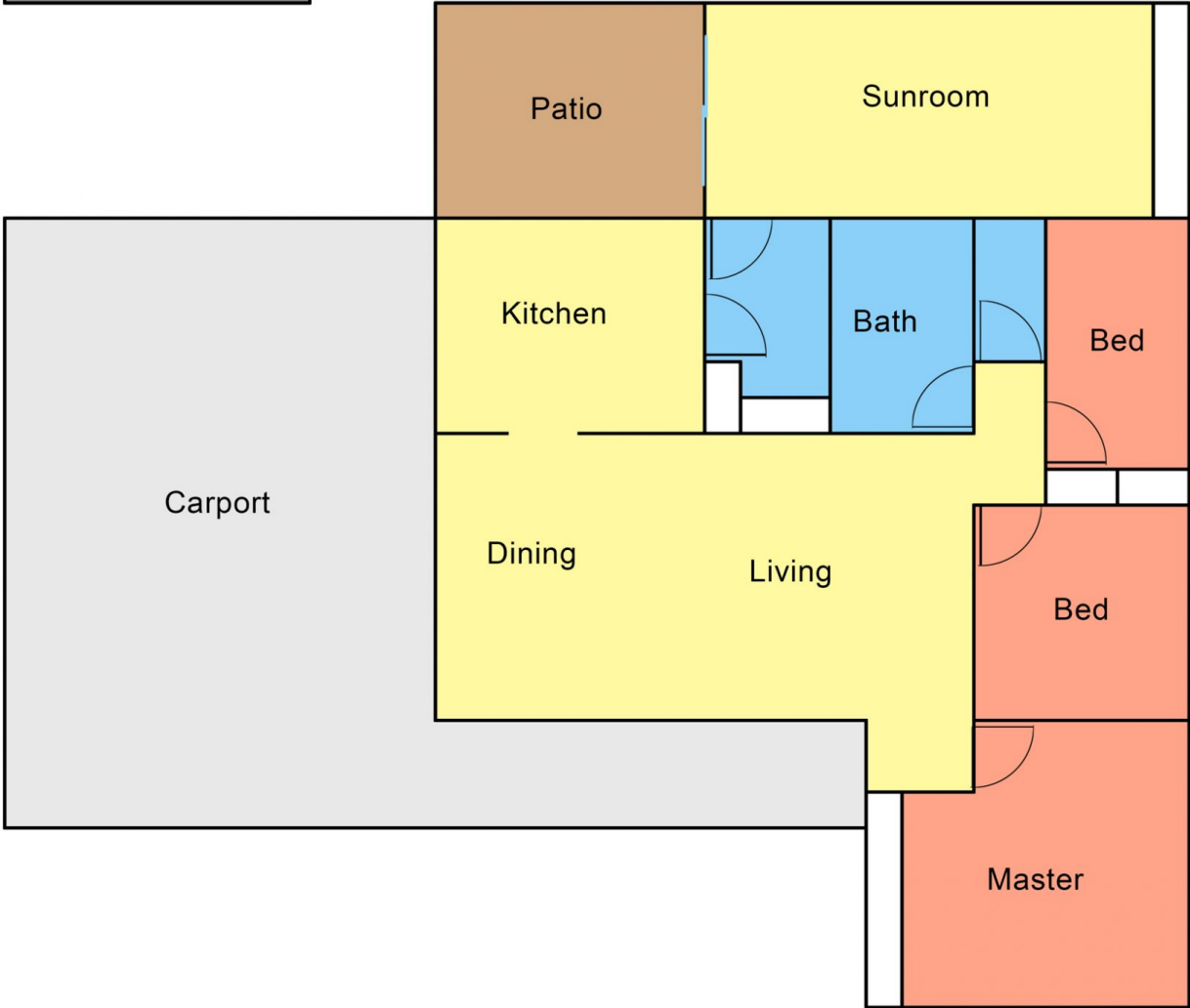
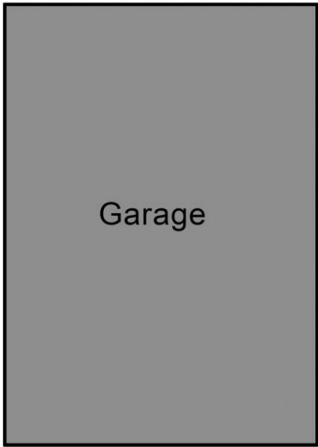
EXTRAS INCLUDE: RC/AC X 3, CEILING FANS

EXPECTED RENT \$500 - \$520 PER WEEK

**Land Size** : 619 sqm  
**View** : <https://www.dowlingterrace.com.au/sale/nsw/port-stephens/raymond-terrace/residential/house/7300664>



**Craig Higgins**  
02 4987 2226



**Disclaimer**

This floor and site plan including fixtures, furniture, measurements and dimension are approximate and for illustrative purposes only. This floor plan gives not guarantee, warranty or representation of accuracy and layout. All enquiries must be directed to the agent or party representing this floor plan