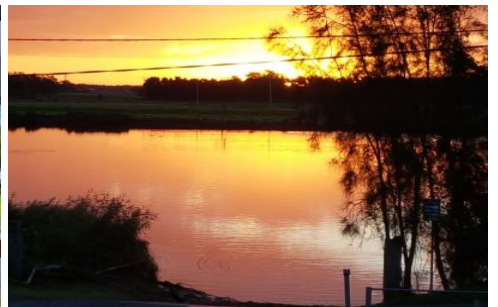
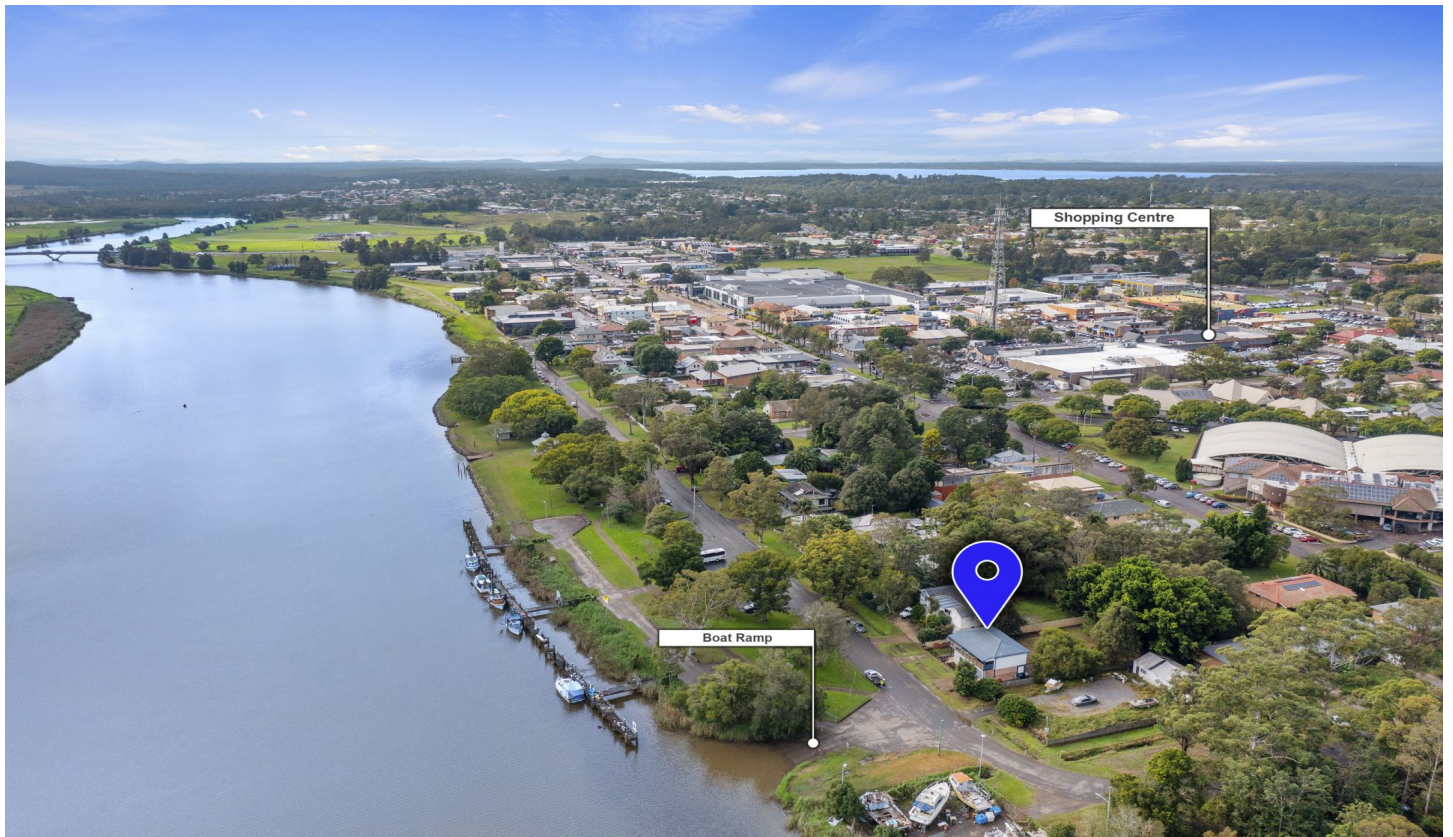


# DOWLING

## PROPERTY



### 33 Hunter Street Raymond Terrace NSW

3 2 2

Only a stones throw from the Hunter River and yet only a 500m walk to the Centro Shopping Centre.

Enjoy the beautiful views from your front verandah of the Hunter River, the surrounding farmland and the sensational sunsets.

The home features:

#### UPSTAIRS

- \* 3 bedrooms all with built-in in robes
- \* Formal lounge
- \* Eat in kitchen
- \* Full width verandah that takes full advantage of the views on offer
- \* Plantation shutters throughout

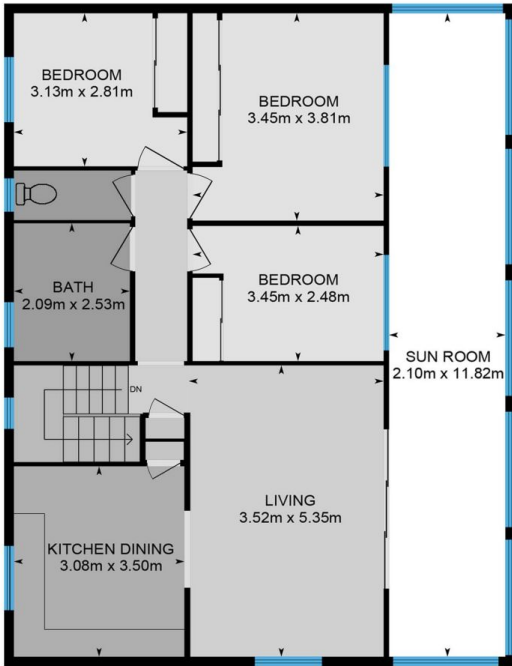
**Land Size** : 809 sqm

**View** : <https://www.dowlingterrace.com.au/sale/nsw/port-stephens/raymond-terrace/residential/house/7300665>

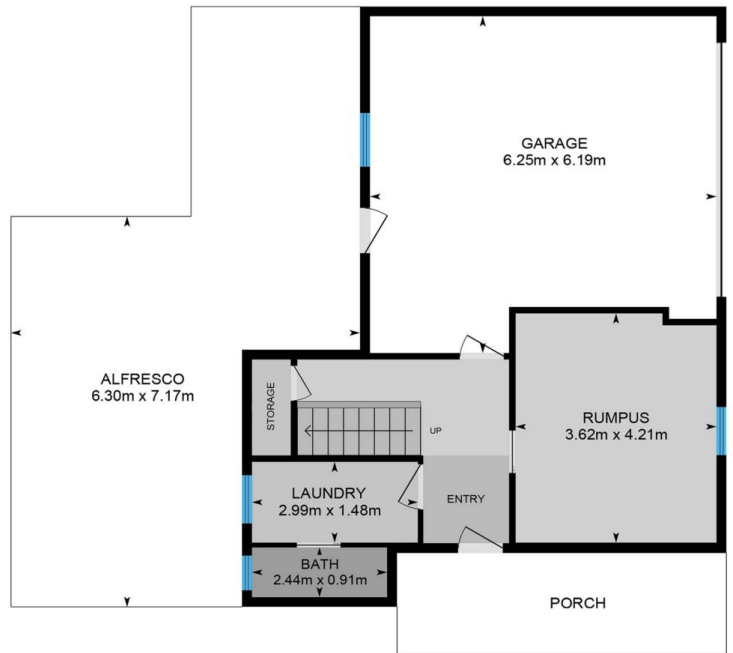


**Craig Higgins**  
02 4987 2226

Measurements are approximate and are to be used only as a guide

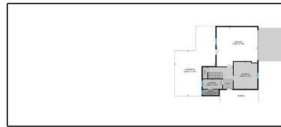


Upper Level



Lower Level

Site Plan  
Back



Front

**DOWLING**  
PROPERTY

33 Hunter Street, Raymond Terrace