



### 8 Nottingham Close Raymond Terrace NSW

5 2 2

Motivated vendors meeting the market! A great location backing onto bushland reserve with no rear neighbours. A split-level design in a house proud cul-de-sac set on over a quarter acre lot yet only a 870 metre walk to Lakeside Shopping Village, tavern, schools and childcare facilities. A steel framed residence with raked ceilings throughout offer abundant light & natural ventilation.

Upon entry:

- Light filled living room
- 4 generous bedrooms with built-in robes
- Master retreat has walk-in robe and a stunning ensuite featuring a curved frameless shower screen. The floating vanity adds to the ensuite's classic yet contemporary design
- Large 3 way bathroom with double vanity

**Price** : \$ 795,000  
**Land Size** : 1136 sqm  
**View** : <https://www.dowlingterrace.com.au/sale/now/port-stephens/raymond-terrace/residential/house/7695809>

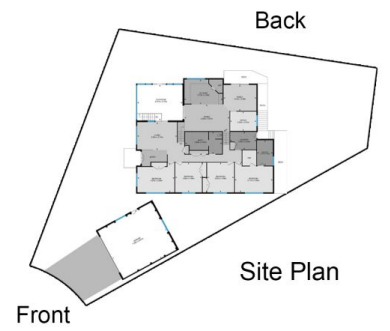
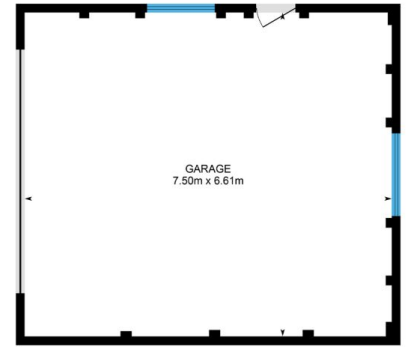


**Kim Hammond**  
0498 990 064



**Liam Higgins**  
0423 832 732

Measurements are approximate and are to be used only as a guide



**DOWLING**  
PROPERTY

8 Nottingham Close, Raymond Terrace