



34 Rosemount Drive Raymond Terrace NSW

3 1 6

Privacy + Space = Family Bliss. Your urban hideaway is tucked away down a battle-axe block where you'll find this brick & tile home that has all the bells and whistles!

There's a double garage with drive thru access to double carport which could be used as both entertainment space and car parking as well as an extra high single carport to house your caravan. You also have an extra-long single garage at the rear of the property with its own RC/AC.

The family home features:

A spacious light filled living room opening onto a Queenslander room with built-in kitchenette, a room you'll love spending time in.

Renovated galley kitchen with soft close drawers & dishwasher, all alongside dining room with spotted gum timber flooring

3 bedrooms all with BIR's

Price : \$ 690,000

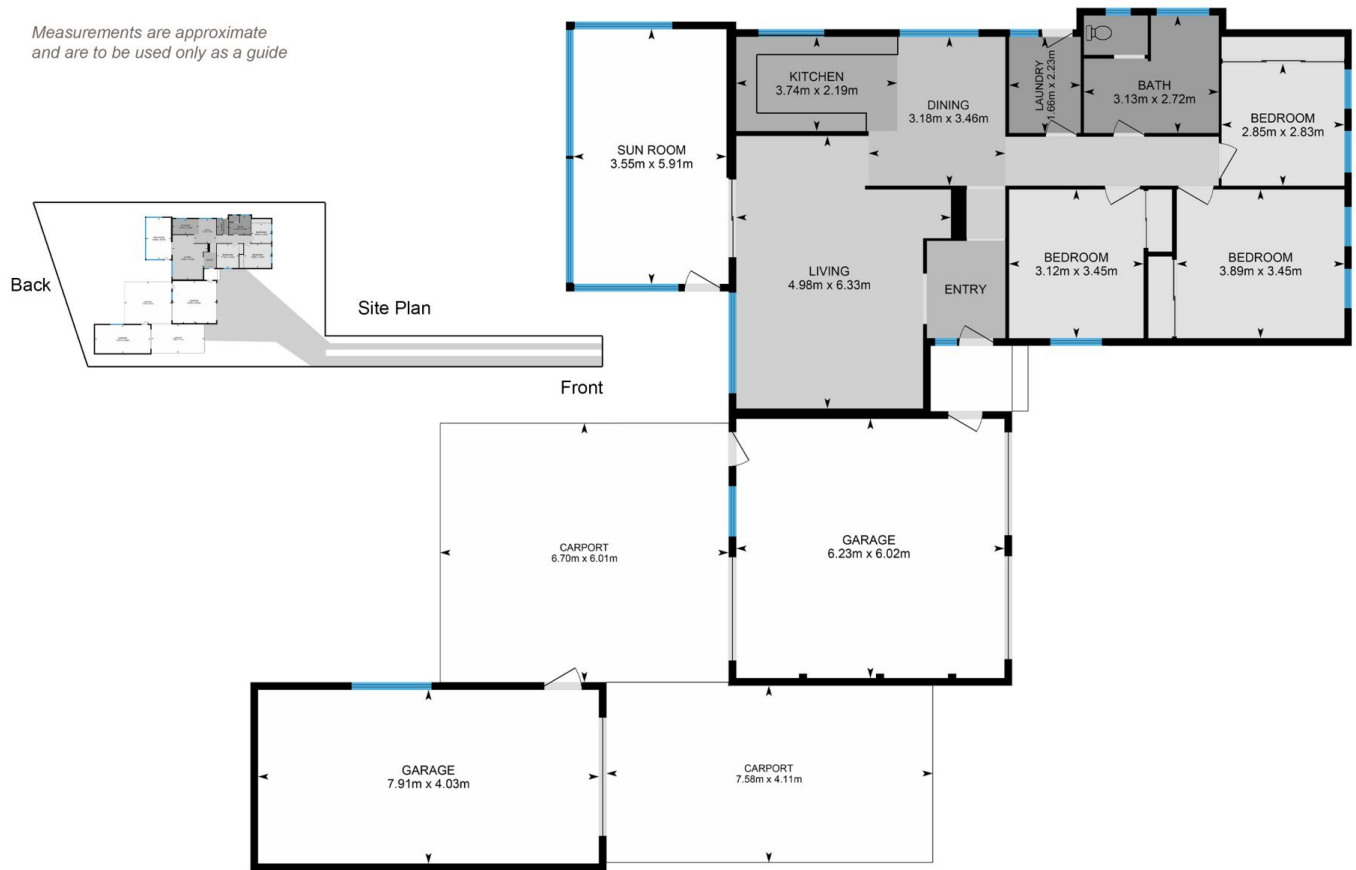
Land Size : 962 sqm

View : <https://www.dowlingterrace.com.au/sale/nsw/port-stephens/raymond-terrace/residential/house/7750521>



Kim Hammond
0498 990 064

Measurements are approximate and are to be used only as a guide



DOWLING
PROPERTY

34 Rosemount Drive, Raymond Terrace