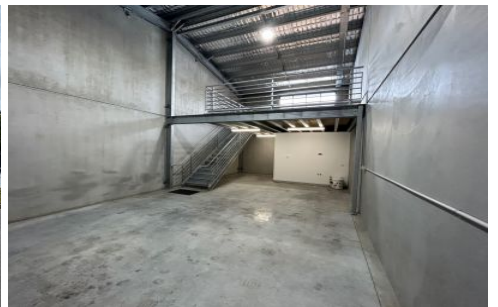


DOWLING

PROPERTY



9/10-12 Kennington Drive Tomago NSW



Near new light industrial unit in great central location close to Newcastle and Pacific/New England Highways.

AVAILABLE NOW

- * 97m² total floor space
- * 72m² ground floor - 25m² mezzanine
- * Concrete panel construction 100mm thick suitable for racking
- * 3m x 5m roller doors with high bay lighting
- * Kitchenette
- * Internal disabled size toilet amenities
- * Alarm system
- * Hot water system
- * External surveillance system
- * 1 reserve carpark
- * Strata Title

Price : \$22,732 pa
Building Size : 97 sqm
View : <https://www.dowlingterrace.com.au/lease/nsw/hunter-valley-lower/tomago/commercial/industrial/7763102>



Kerri Handford
0459 713 558