

## 7/8 Mosman Place Raymond Terrace NSW

2 1 1

Built in the 1980's the townhouse may need a bit of an upgrade, but the bonus here is it is currently leased for \$400 per week.

### Features:

Galley style laminate kitchen and dining area.

The living space with RC/AC opens out to the courtyard through sliding glass doors. With a little imagination, turn the outdoor space into something fun and functional.

Laundry has a 2nd toilet.

A timber staircase leads to 2 bedrooms with built-in robes & a serviceable bathroom with shower & toilet.

The townhouse has a single carport.

Perfectly positioned overlooking an abundance of greenery & birdlife, walking and cycling tracks are nearby for an easy escape to nature.

**Price** : \$ 333,333

**View** : <https://www.dowlingterrace.com.au/sale/nsw/port-stephens/raymond-terrace/residential/unit/7791996>

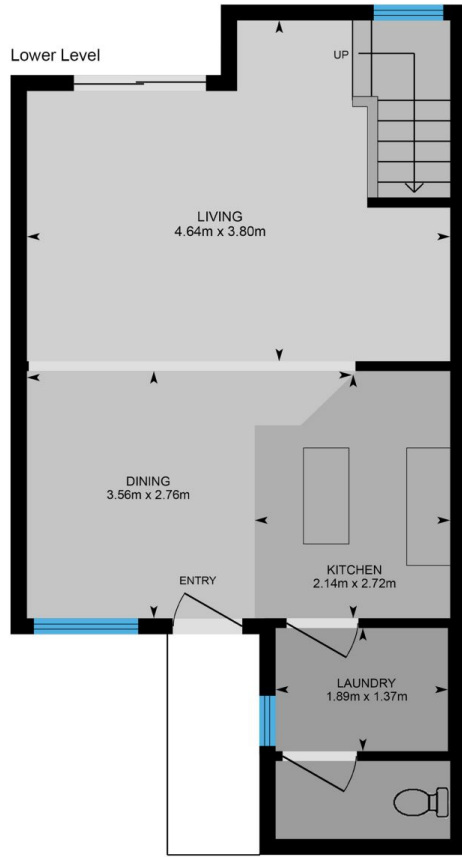
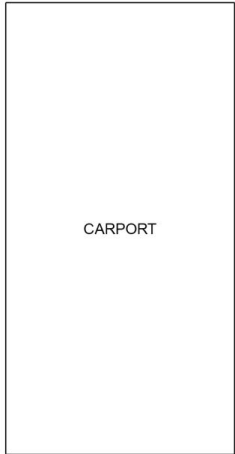


**Kim Hammond**  
0498 990 064



**Liam Higgins**  
0423 832 732

Measurements are approximate  
and are to be used only as a guide



**DOWLING**  
PROPERTY

7/8 Mosman Place, Raymond Terrace