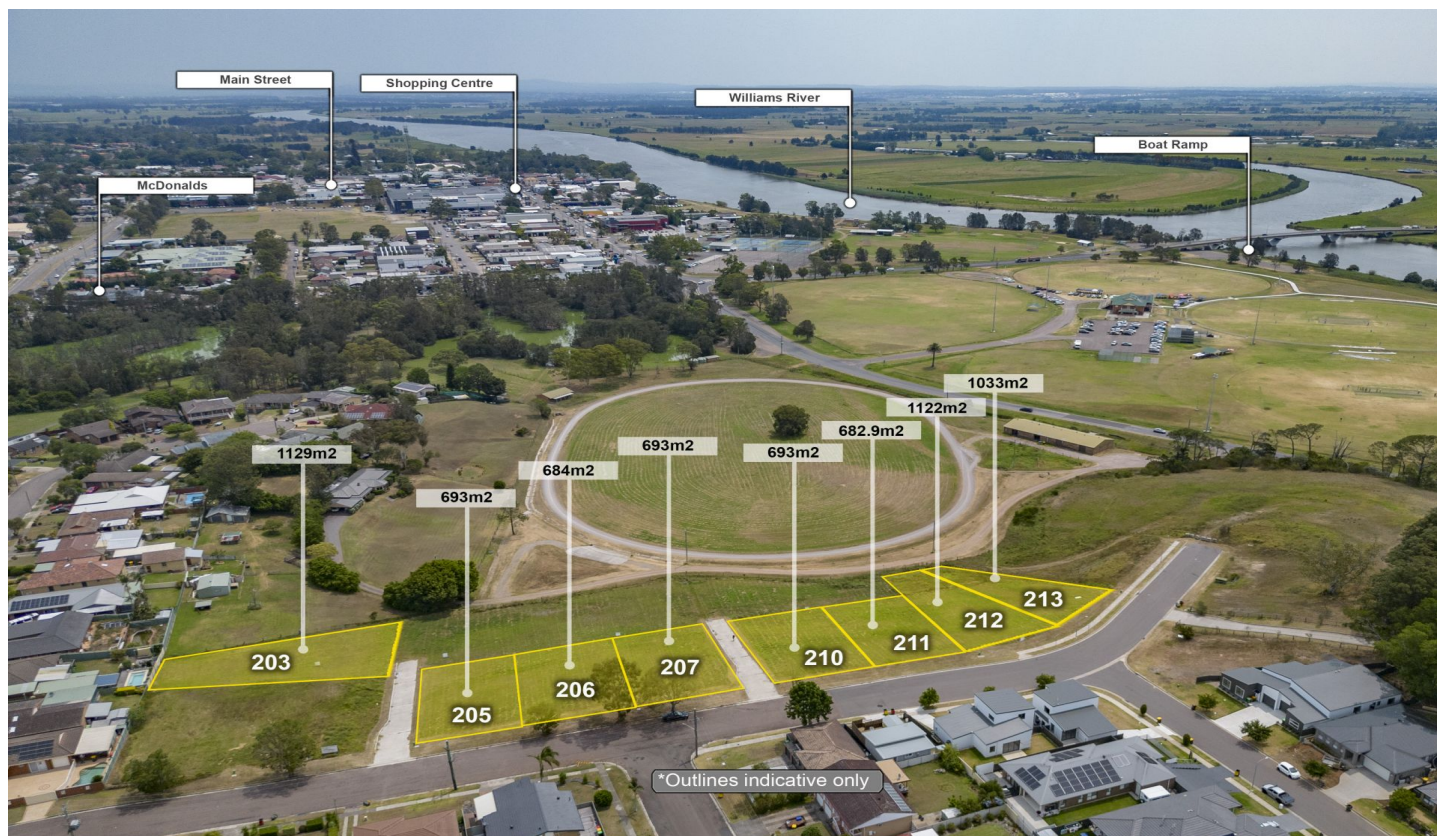


DOWLING

PROPERTY



213/27 Binns Street Raymond Terrace NSW

- * Prime location, well established area
- * 1033m2
- * Only 2km drive or 1km walk to centre of town
- * Offering potential views of the Hunter and Williams Rivers and surrounding farmland
- * Elevated with a slope down from the road is advantageous. This could be particularly appealing for a split-level development, allowing for creative and aesthetically pleasing designs.

This information has been provided to us by third parties and we do not accept responsibility for its accuracy. You should make your own enquiries and check the information so as to determine whether or not this information is in fact accurate. You must make your own assessment and obtain professional advice if necessary.

Land Size : 1033 sqm
View : <https://www.dowlingterrace.com.au/sale/now/port-stephens/ramond-terrace/residential/land/7851321>



Kim Hammond
 0498 990 064



Liam Higgins
 0423 832 732