



## 14 Dunn Place Raymond Terrace NSW

3 1 6

This charming brick and tile residence with ample parking offers a comfortable and stylish living experience conveniently located only 3.5 kilometres from Raymond Terrace CBD.

**Land Size** : 667 sqm  
**View** : <https://www.dowlingterrace.com.au/sale/nsw/port-stephens/raymond-terrace/residential/house/7935500>

Here's what you can expect:

- \* Inviting tiled entry leading to a carpeted lounge room with RC/AC.
- \* Combined neat and tidy laminate kitchen equipped with a dishwasher adjoining a dining room.
- \* Fully renovated bathroom boasting a walk-in shower with disabled access and a separate toilet for added convenience.
- \* Three bedrooms, with the main bedroom featuring mirrored robes and the others set up with built-in robes.
- \* Plantation shutters, ceiling fans and electric external blinds throughout for privacy and energy efficiency.

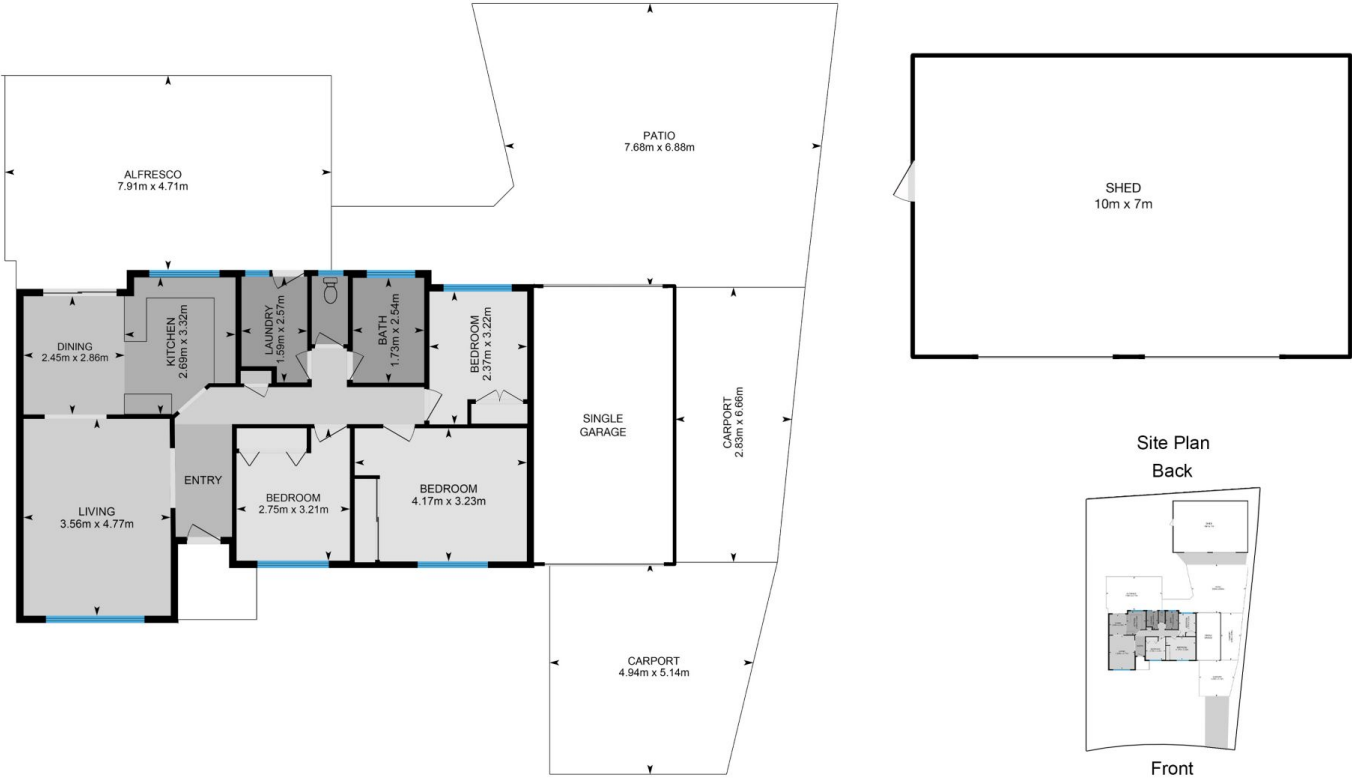


**Kim Hammond**  
0498 990 064



**Liam Higgins**  
0423 832 732

Measurements are approximate  
and are to be used only as a guide



**DOWLING**  
PROPERTY

14 Dunn Place Raymond Terrace