



12 Sabre Avenue Raymond Terrace NSW

3 1 2

Nestled in a quiet neighbourhood and boasting charm and comfort, this three bedroom brick home is perfect for a first home buyer or for someone looking to invest.

Perfectly positioned within walking distance to the Muree golf course, schools, Raymond Terrace CBD and with its unlimited potential, this is certainly one you don't want to miss.

Key features include:

- Three generously sized bedrooms, all equipped with ceiling fans and two with built ins.
- Galley kitchen with plenty of cupboard space and loads of potential.
- Large living area with air conditioning and fire place.
- Open dining room with polished floorboards.

Price : \$ 600,000
Building Size : 110 sqm
Land Size : 523 sqm
View : <https://www.dowlingterrace.com.au/sale/nsw/port-stephens/raymond-terrace/residential/house/7941580>

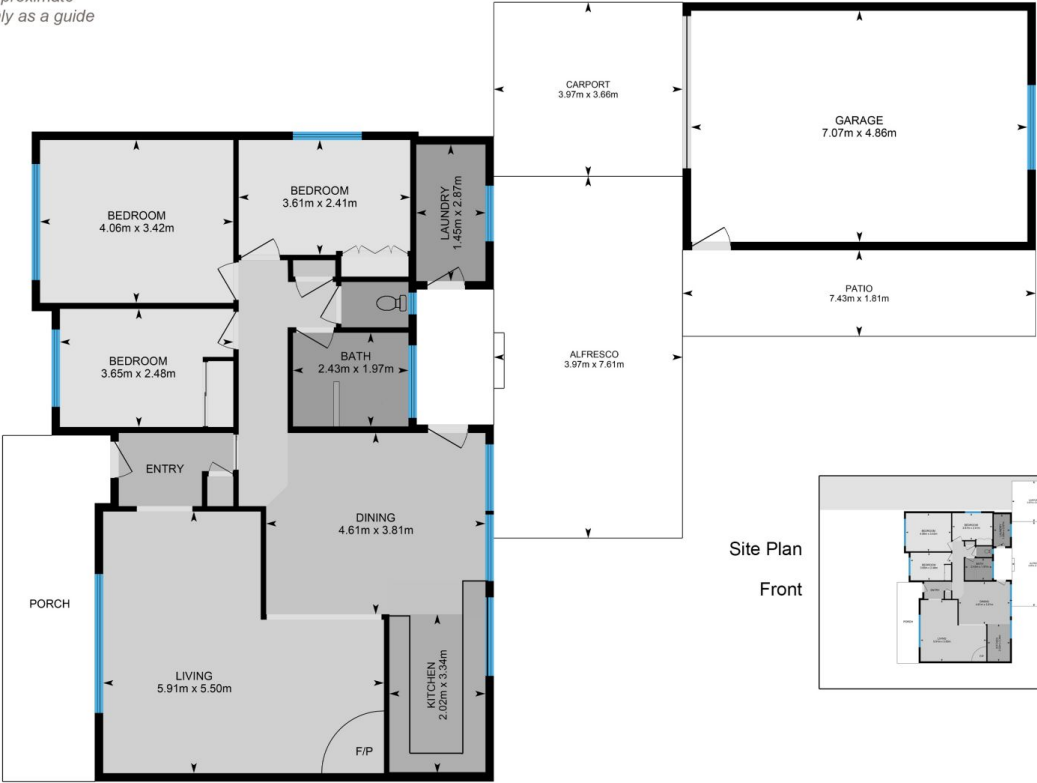


Liam Higgins
0423 832 732



Kim Hammond
0498 990 064

Measurements are approximate
and are to be used only as a guide



DOWLING
PROPERTY

12 Sabre Avenue Raymond Terrace