



45 Elizabeth Avenue Raymond Terrace NSW

3 1 2

Nestled in a tranquil setting with a welcoming front porch overlooking reserve, this charming residence presents an exceptional opportunity for comfortable living. Upon entering, you'll be greeted by the timeless elegance of high ceilings throughout, meticulously maintained by a fabulous long-term tenant who has lovingly cared for this home.

The home features:

- ? Spacious lounge room, featuring an ornate fireplace and a convenient gas bayonet for heating, perfect for cozy nights in.
- ? Boasting three bedrooms, the main and second bedrooms with ceiling fans and mirrored robes, while the main bedroom also offers the comfort of reverse cycle air conditioning.
- ? Second living room combined with a dining area, creating a seamless flow from the modern kitchen, equipped with

Price : \$580,000 - \$599,000
Land Size : 601 sqm
View : <https://www.dowlingterrace.com.au/sale/nsw/port-stephens/raymond-terrace/residential/house/7977565>

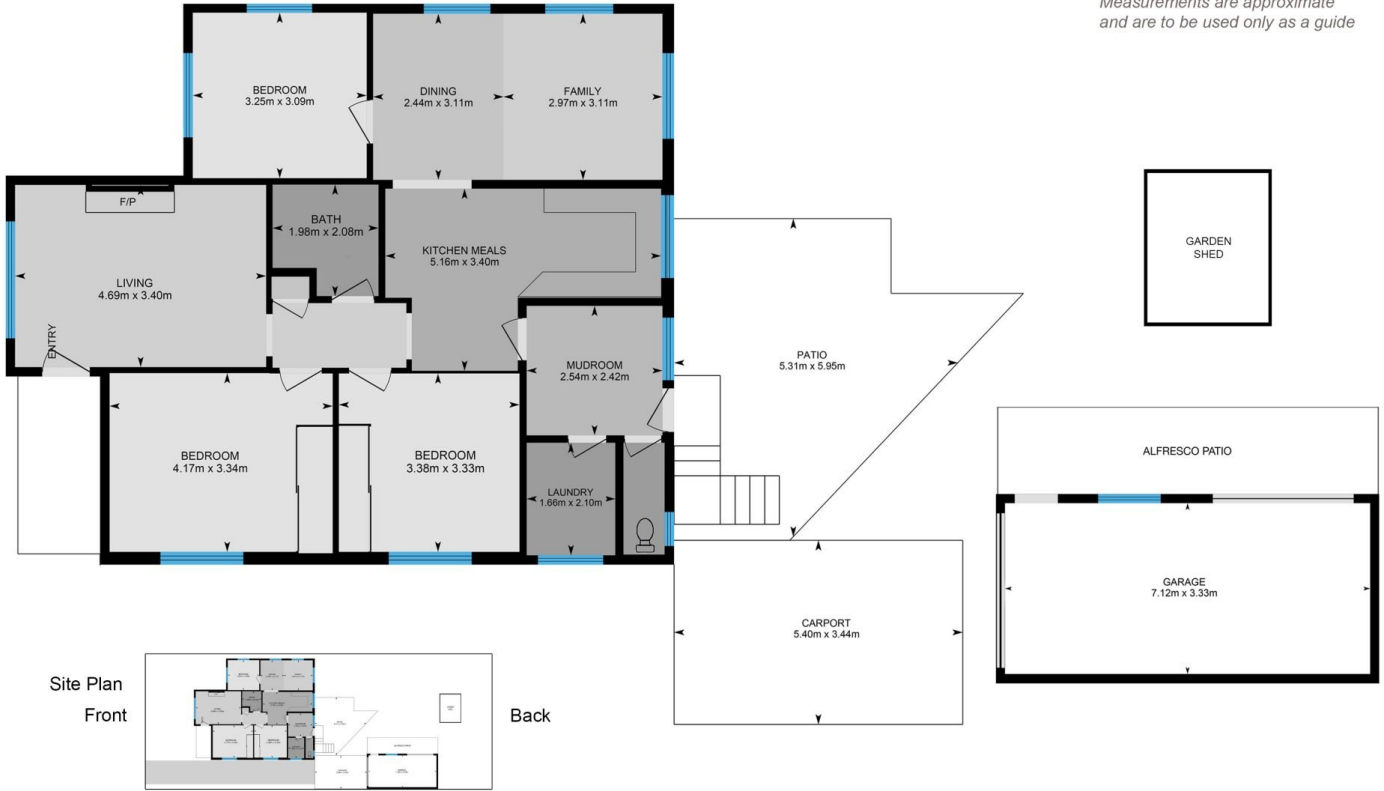


Kim Hammond
0498 990 064



Liam Higgins
0423 832 732

Measurements are approximate and are to be used only as a guide



DOWLING
PROPERTY

45 Elizabeth Avenue, Raymond Terrace