



45 Beaton Avenue Raymond Terrace NSW

5 3 3

Experience serene living in this stunning two-story residence, perfectly positioned on a generous 756 sqm block with sweeping rural vistas.

Ground Floor:

- ? Enter through a chic tiled foyer that sets the tone for elegance throughout the home.
- ? Enjoy a spacious formal lounge room.
- ? A versatile 5th bedroom on this level is perfect for guests or a home office.
- ? The cozy living room offers a warm space for everyday comfort.
- ? Modern kitchen, equipped with a dishwasher, abundant storage and generous counter space.
- ? Dine in style in the sunlit atrium dining area.
- ? The family room seamlessly transitions to the 'paradise room', enhancing your indoor-outdoor living experience.

Price : \$ 930,000
Land Size : 756 sqm
View : <https://www.dowlingterrace.com.au/sale/ns-w/port-stephens/raymond-terrace/residential/house/8049349>

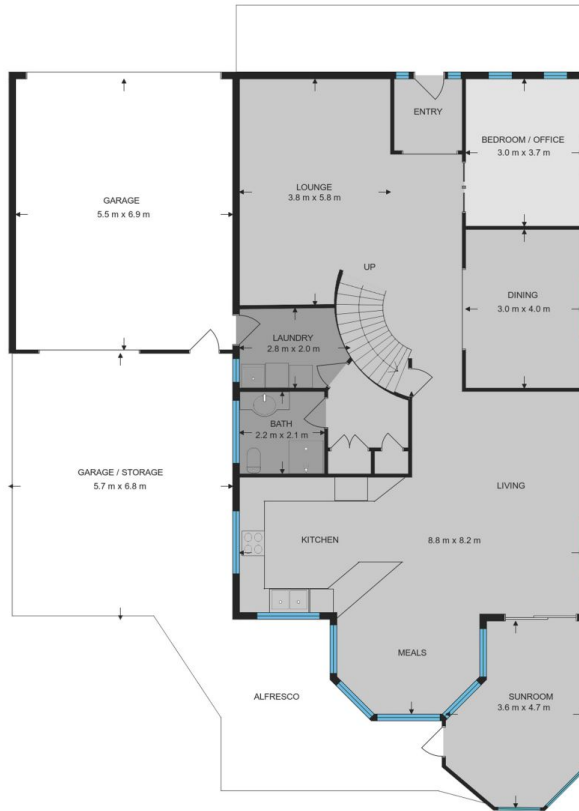
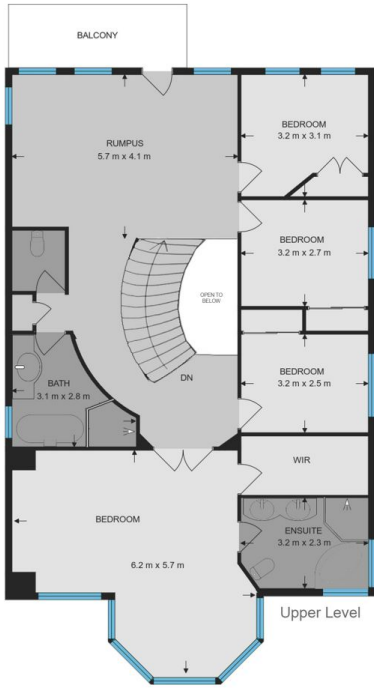


Kim Hammond
0498 990 064



Liam Higgins
0423 832 732

Measurements are approximate and are to be used only as a guide



DOWLING
PROPERTY

45 Beaton Avenue, Raymond Terrace