



### 7 Myanga Street Raymond Terrace NSW

4 1 2

Located in the highly desirable Pommy Hill area of Raymond Terrace, located within 1km of the CBD, this beautifully renovated four bedroom brick home is perfect for anyone seeking comfort, style and convenience. Nestled on a corner block with side access, this property boasts an array of modern features and timeless charm.

**Price** : \$ 690,000  
**Land Size** : 546 sqm  
**View** : <https://www.dowlingterrace.com.au/sale/nsw/port-stephens/raymond-terrace/residential/house/8123094>

#### Key Features:

- Four carpeted bedrooms come with built-in wardrobes and ceiling fans for year-round comfort.
- Open plan living & dining, featuring timber floorboards, a cozy fireplace, air conditioning, and elegant plantation shutters, creating a warm and inviting atmosphere.
- Spacious and practical kitchen with ample bench and cupboard space, a modern oven with cooktop and dishwasher to make everyday life easier.

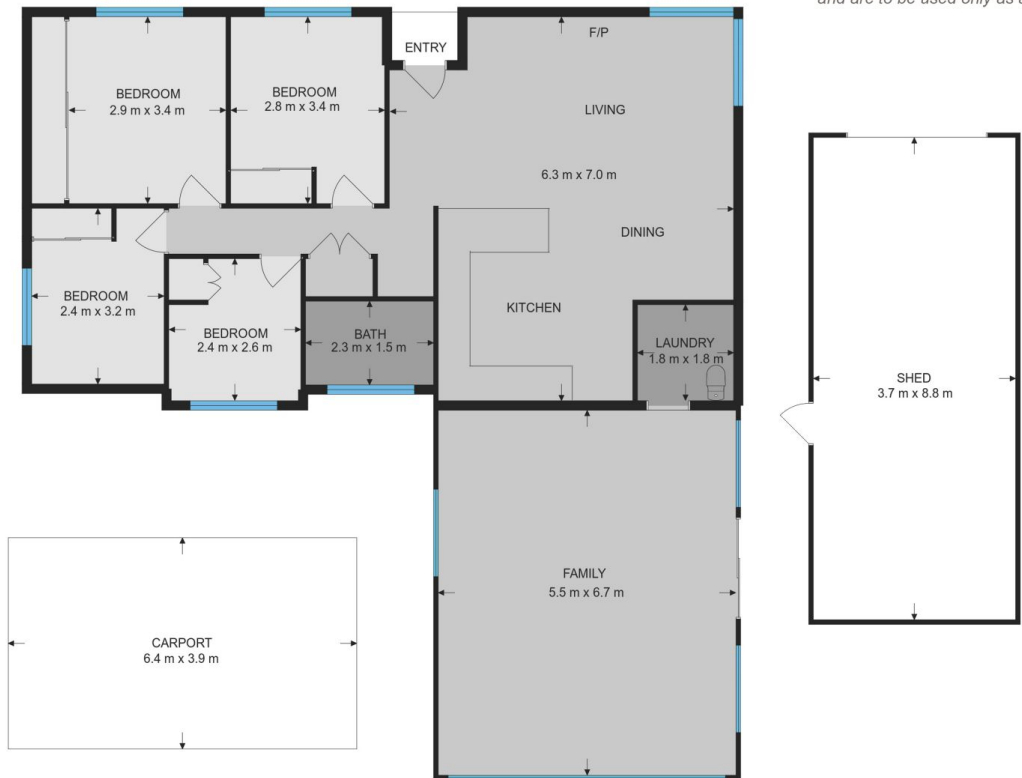


**Liam Higgins**  
0423 832 732



**Kim Hammond**  
0498 990 064

Measurements are approximate  
and are to be used only as a guide



**DOWLING**  
PROPERTY

7 Myanga Street, Raymond Terrace