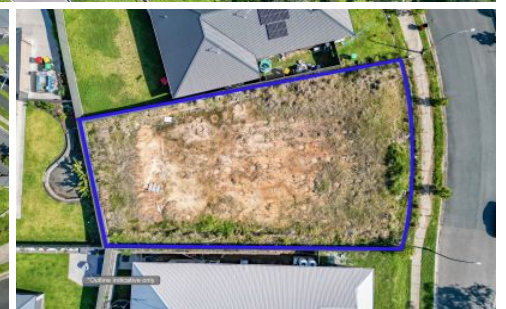
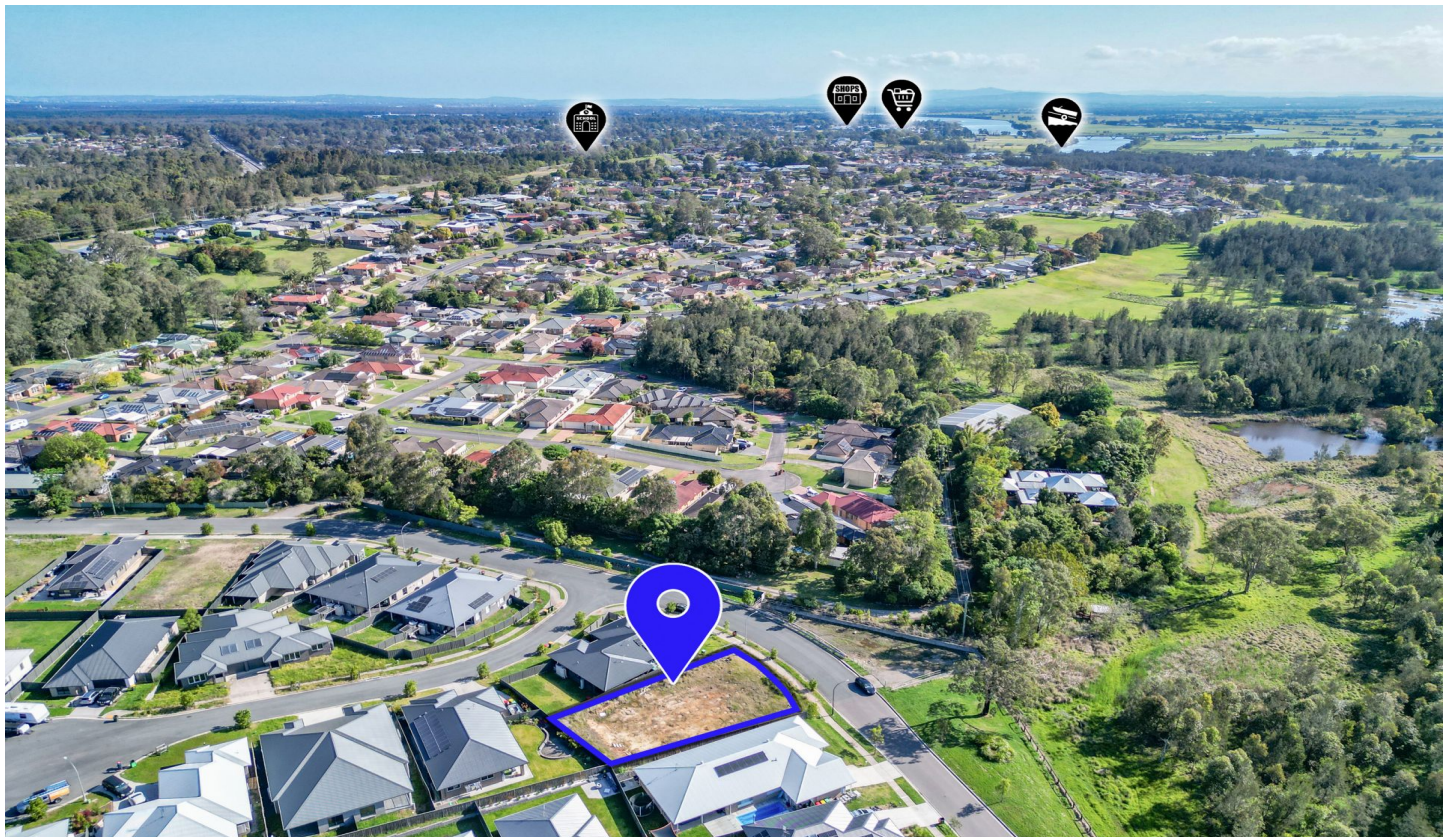


# DOWLING

## PROPERTY



### 36 Kurunga Avenue Raymond Terrace NSW

Discover the ultimate opportunity at 26 Kurunga Ave, a premium residential land parcel in the highly sought-after Potter's Lane Estate, located off Rees James Road. Nestled just 4 kilometres north of Raymond Terrace CBD, this boutique estate offers a charming community vibe, surrounded by quality newly built homes and breathtaking rural views.

Don't miss your chance to secure this ideal location and create your perfect sanctuary.

Located centrally:

350 metres to childcare centre & pre-school

4 kms to Raymond Terrace CBD

19 kms to Newcastle Airport

19 kms to M1 Motorway

31 kms to the city of Newcastle

**Price** : \$ 415,000  
**Land Size** : 758 sqm  
**View** : <https://www.dowlingterrace.com.au/sale/nsw/port-stephens/raymond-terrace/residential/land/8155874>



**Kim Hammond**  
0498 990 064



**Liam Higgins**  
0423 832 732