



16 Cederwood Crescent Raymond Terrace NSW

3 1 2

This charming and spacious three-bedroom brick home, nestled on a generous 705 sqm block with side access, is brimming with potential. Featuring multiple living spaces and positioned perfectly near shops, schools, and sporting fields, it's a standout choice for first-home buyers or savvy investors.

Price : \$ 635,000
Land Size : 705 sqm
View : <https://www.dowlingterrace.com.au/sale/nsw/port-stephens/raymond-terrace/residential/house/8175685>

Key Features:

- Three well-sized bedrooms, all with built-in wardrobes and ceiling fans for added comfort.
- Open Living Spaces: Air-conditioned family room flows into a large open-plan living and dining area, perfect for relaxing or entertaining.
- Neat and tidy kitchen with ample bench and cupboard space
- Second Lounge space can be easily converted into a

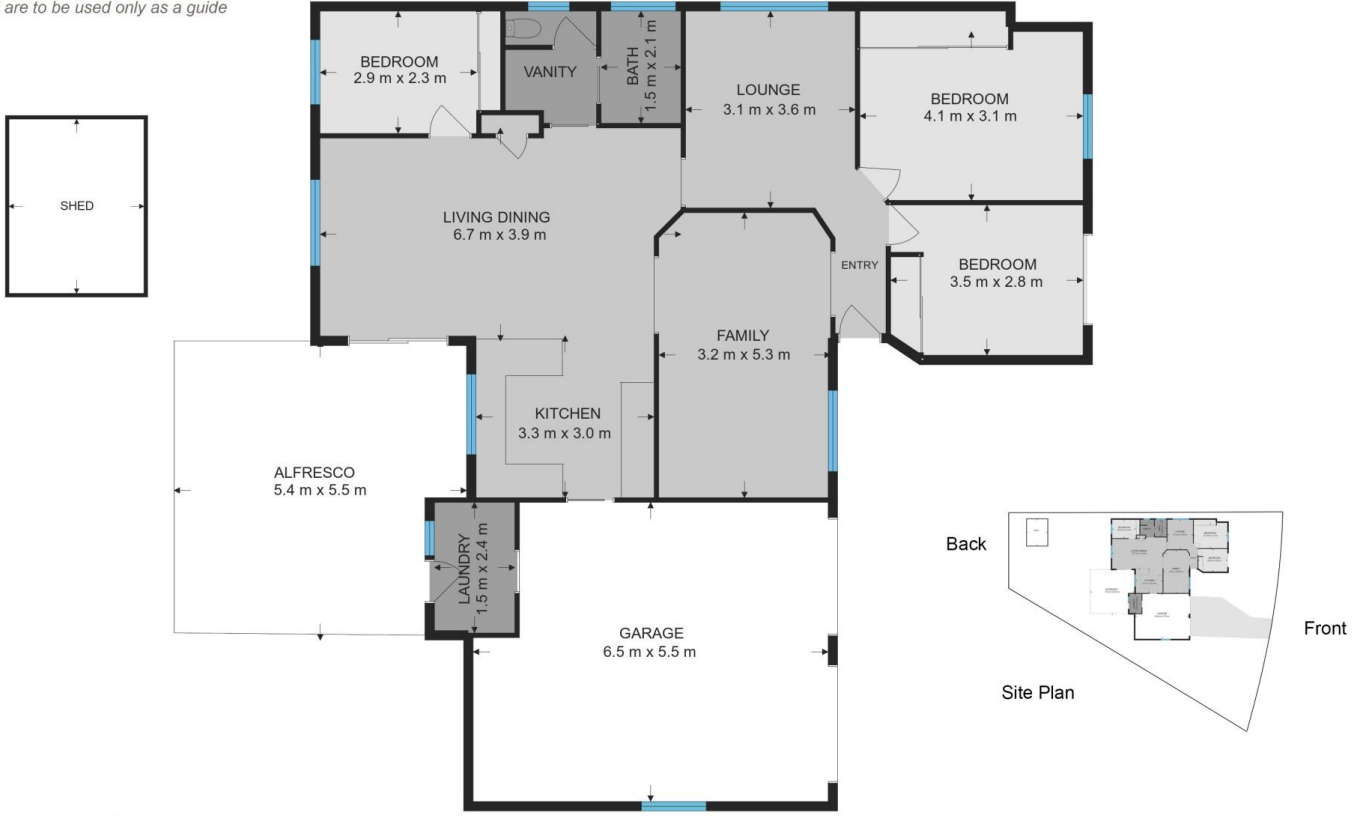


Liam Higgins
0423 832 732



Kim Hammond
0498 990 064

Measurements are approximate and are to be used only as a guide



DOWLING
PROPERTY

16 Cederwood Cr Raymond Terrace