

9 Binns Street Raymond Terrace NSW

4 2 2

Introducing a stunning brand new home in the highly sought-after Roslyn Park Estate, Raymond Terrace. This immaculate property offers the perfect balance of modern living and serene natural beauty, all while being ideally located for convenience and access to local amenities.

Boasting uninterrupted views, this home is a true retreat. Step inside to discover multiple spacious living areas, a modern galley kitchen, and high-end finishes throughout. With beautifully landscaped grounds and a driveway already in place, all that's left to do is move in and enjoy!

Key Features:

- * 2550 mm ceilings throughout for a sense of space and openness
- * Stunning galley kitchen with walk-in pantry, 20mm manufactured stone benchtops, soft cabinetry & quality

Price : \$840,000 - \$870,000
Land Size : 779.3 sqm
View : <https://www.dowlingterrace.com.au/sale/nsw/port-stephens/raymond-terrace/residential/house/8202531>

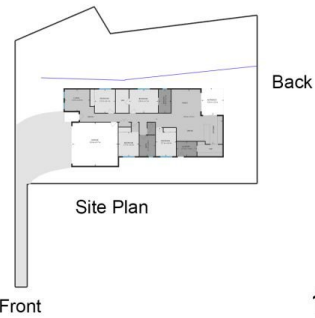


Liam Higgins
0423 832 732



Kim Hammond
0498 990 064

Measurements are approximate
and are to be used only as a guide



DOWLING
PROPERTY

1/9 Binns Street, Raymond Terrace