



3 Smiths Lane Raymond Terrace NSW

4 2 2

Step into a contemporary lifestyle with this ultra-modern, six-year-old torrens title home, designed to suit both owner-occupiers and investors.

Situated in a prime location, this property offers unparalleled convenience, just 1km from Raymond Terrace CBD, 500m from Muree Golf Club and close to sought-after schools, including 700m to the local primary and 1.9km to Irrawang High School.

Currently leased at \$620 per week until February 26, 2025, this is a prime investment opportunity or a perfect family retreat.

Property Highlights:

- ? 4 spacious bedrooms, all with built-in robes
- ? Master suite with ensuite and walk-in robe
- ? Open-plan lounge, dining, and kitchen for seamless living
- ? Sleek kitchen with island bench, Caesarstone surfaces,

Price : \$ 640,000
Land Size : 319 sqm
View : <https://www.dowlingterrace.com.au/sale/nsw/port-stephens/raymond-terrace/residential/house/8209510>

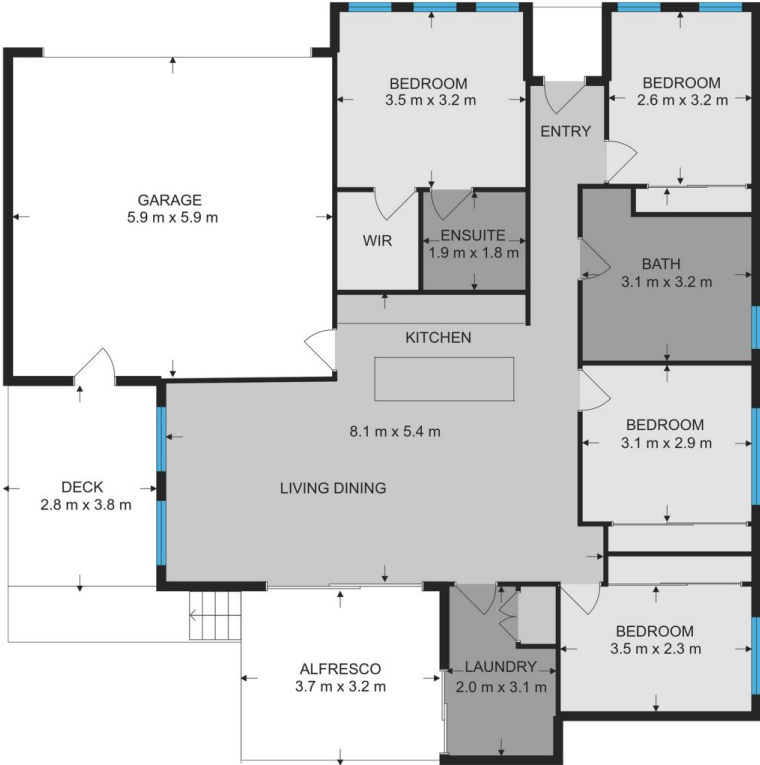


Kim Hammond
0498 990 064



Liam Higgins
0423 832 732

Measurements are approximate and are to be used only as a guide



DOWLING
PROPERTY

3 Smiths Lane, Raymond Terrace