



20 Watt Street Raymond Terrace NSW

3 2 2

A fantastic family home offering space, comfort & functionality. Set on a generous 796 square meter block. Whether you're a family searching for room to grow, an investor seeking a smart addition to your portfolio, or a first-time buyer ready to take the leap, this property ticks all the boxes.

Price : \$620,000 - \$650,000
Land Size : 796.8 sqm
View : <https://www.dowlingterrace.com.au/sale/nsw/port-stephens/raymond-terrace/residential/house/8218899>

Key Features Include:

- ? New carpet in the lounge room for a fresh, cozy feel
- ? Galley style laminate kitchen with dishwasher and abundant cupboard space
- ? Recently renovated combined converted laundry into a second bathroom/laundry, with floor to ceiling tiles adding modern convenience.
- ? Spacious open-plan 2nd living & dining area with modern tiling flooring & RC/AC
- ? Built-in wardrobes in all 3 bedrooms

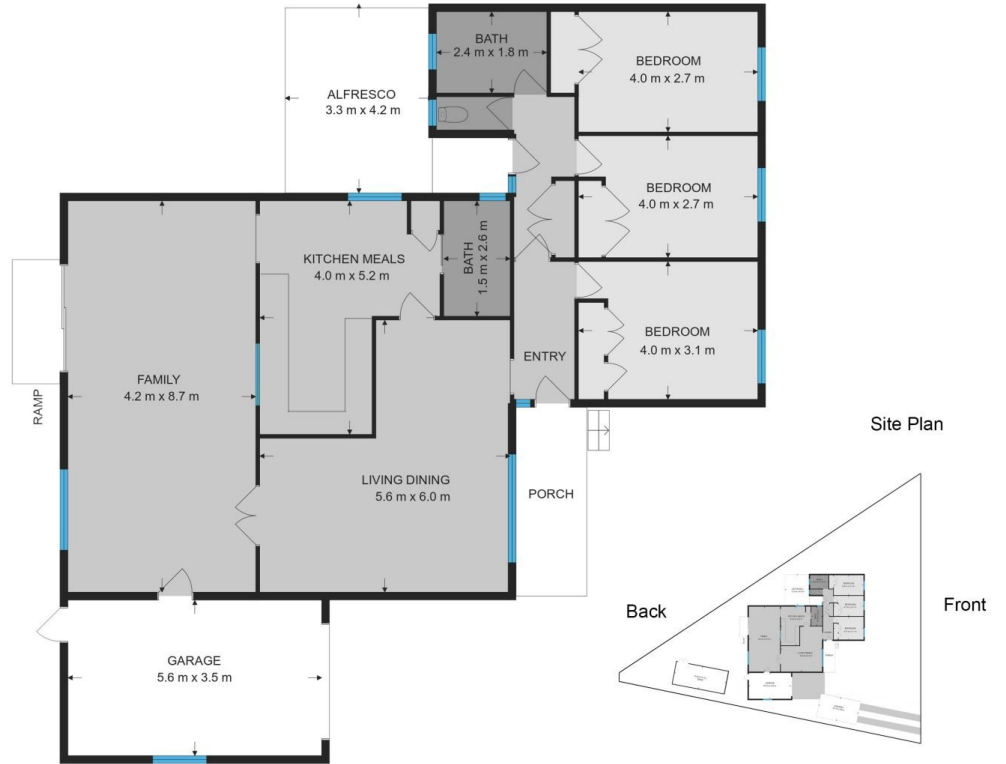
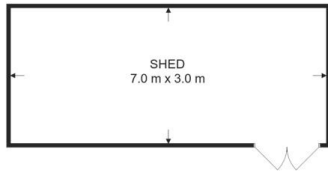
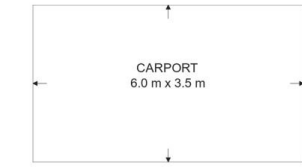


Kim Hammond
0498 990 064



Liam Higgins
0423 832 732

Measurements are approximate
and are to be used only as a guide



Site Plan



DOWLING
PROPERTY

20 Watt Street, Raymond Terrace