



9 Roslyn Street Raymond Terrace NSW

3 1 2

This 3-bedroom brick home offers an incredible opportunity for first-home buyers, savvy investors, or those seeking dual-occupancy potential. Set on a generous 560sqm corner block, with a decent sized shed, this property is brimming with possibilities.

Price : \$540,000
Land Size : 560 sqm
View : <https://www.dowlingterrace.com.au/sale/nsw/port-stephens/raymond-terrace/residential/house/8225560>

Key Features:

- ? 3 Bedrooms: All include ceiling fans, with built-in wardrobes in two.
- ? Floorboards Throughout: Easy to maintain and full of character.
- ? Bathroom: Features a shower and toilet.
- ? Original Kitchen: Plenty of bench and cupboard space, perfect for cooking or an update.
- ? Dining Room: Conveniently located off the kitchen with a ceiling fan.

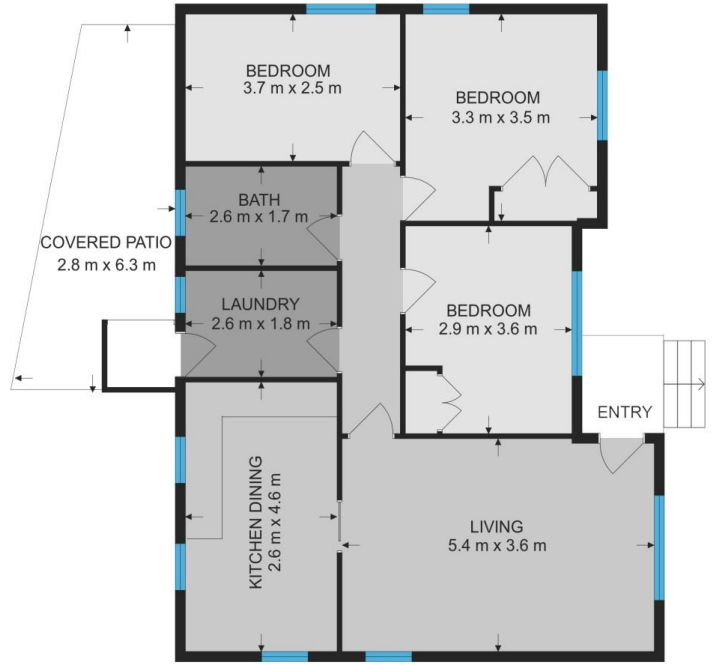
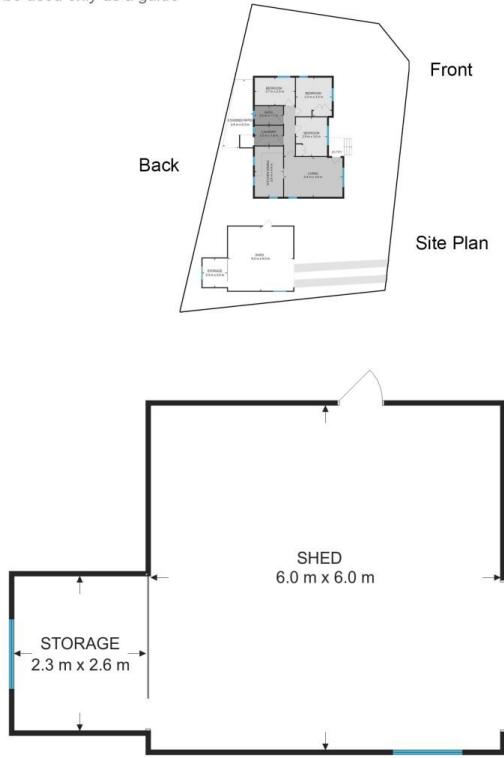


Liam Higgins
0423 832 732



Kim Hammond
0498 990 064

Measurements are approximate and are to be used only as a guide



DOWLING
PROPERTY

9 Roslyn Street, Raymond Terrace