



3 Durham Close Raymond Terrace NSW

3 2 2

Located in the highly sought-after Lakeside area, this well-maintained home offers the perfect blend of lifestyle and investment potential. Just minutes from quality schools, recreation facilities, and the bustling Lakeside Shopping Hub, this property ticks all the boxes for convenience and comfort.

Whether you're looking to move in later or secure a fantastic rental return, this property delivers. Currently tenanted at \$640 per week with a lease in place until November, it's an excellent opportunity for investors to generate immediate income.

Inside, you'll find a spacious front living area with ceiling fan and reverse cycle air conditioning, a separate kitchen and dining zone with loads of storage and a dishwasher, and three generously sized bedrooms. The master

Price : \$ 684,000
Land Size : 541 sqm
View : <https://www.dowlingterrace.com.au/sale/nsw/port-stephens/raymond-terrace/residential/house/8368634>

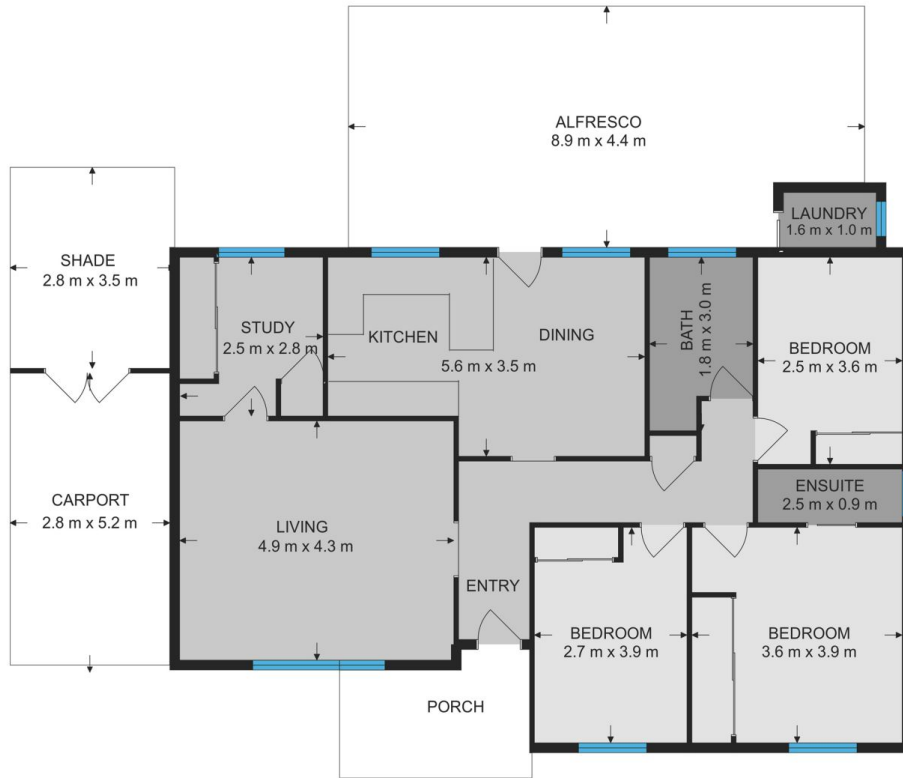


Liam Higgins
0423 832 732



Kim Hammond
0498 990 064

Measurements are approximate and are to be used only as a guide



DOWLING
PROPERTY

3 Durham Close, Raymond Terrace