



## 28 Marshall Street Clarence Town NSW

3  1  4 

Set on a generous, 2043sqm flat block in the heart of Clarence Town, this beautifully presented home delivers the perfect blend of character, comfort and serious shed space. Freshly painted throughout and showcasing stunning timber floorboards and shutters, this is a property that feels like home the moment you walk in.

Inside, you'll find a spacious open plan living and dining area complete with a cosy fireplace, air-conditioning and ceiling fan, ideal for year-round comfort. The kitchen offers plenty of bench and cupboard space, classic timber cabinetry, a double sink, and a great outlook over the backyard so you can keep an eye on the kids while cooking.

Accommodation includes three well-sized bedrooms, all fitted with ceiling fans, and two featuring mirrored built-in

**Price** : \$800,000 - \$850,000  
**Land Size** : 2043 sqm  
**View** : <https://www.dowlingterrace.com.au/sale/nsw/hunter-valley-lower/clarence-town/residential/house/8686272>



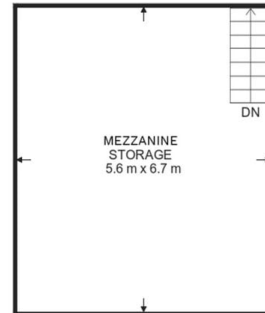
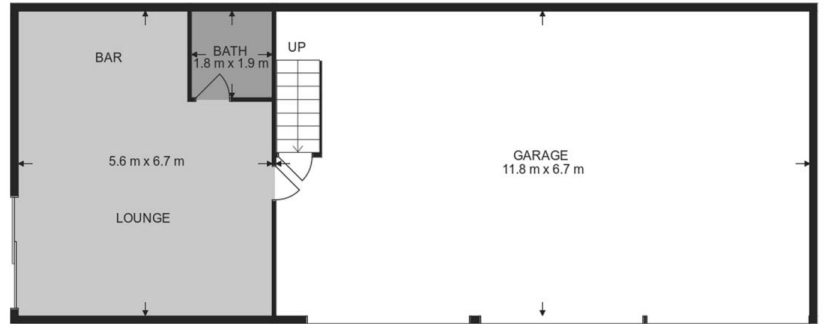
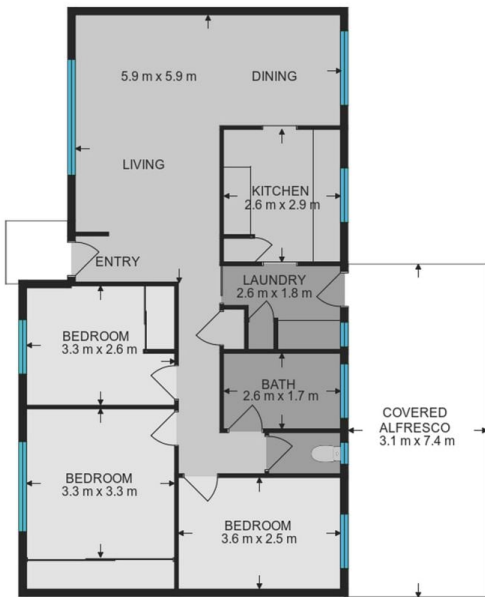
**Liam Higgins**  
0423 832 732



**Kim Hammond**  
0498 990 064

Site Plan

Measurements are approximate and are to be used only as a guide



**DOWLING**  
PROPERTY

28 Marshall Street Clarence Town