



23 Green Slopes Drive Raymond Terrace NSW

4 3 3

Perfectly positioned in a sought-after pocket of Raymond Terrace, this solid brick and tile residence offers generous proportions, multiple living zones, and exceptional outdoor entertaining on a substantial 977 sqm block adjoining reserve at the rear.

Designed for comfortable family living, the home welcomes you with an inviting entry foyer leading to a large formal lounge and spacious U-shaped kitchen complete with gas cooktop, ample storage, and adjoining dining area. Step outside to a huge covered entertaining space overlooking the sparkling in-ground pool and spa - the ideal setting for year-round gatherings.

A practical floorplan places all four bedrooms in a separate wing away from the living areas. Each bedroom includes built-in robes, while the main bedroom has an ensuite.

Price : \$980,000
Land Size : 977 sqm
View : <https://www.dowlingterrace.com.au/sale/nsw/port-stephens/raymond-terrace/residential/house/8691391>



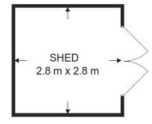
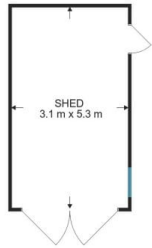
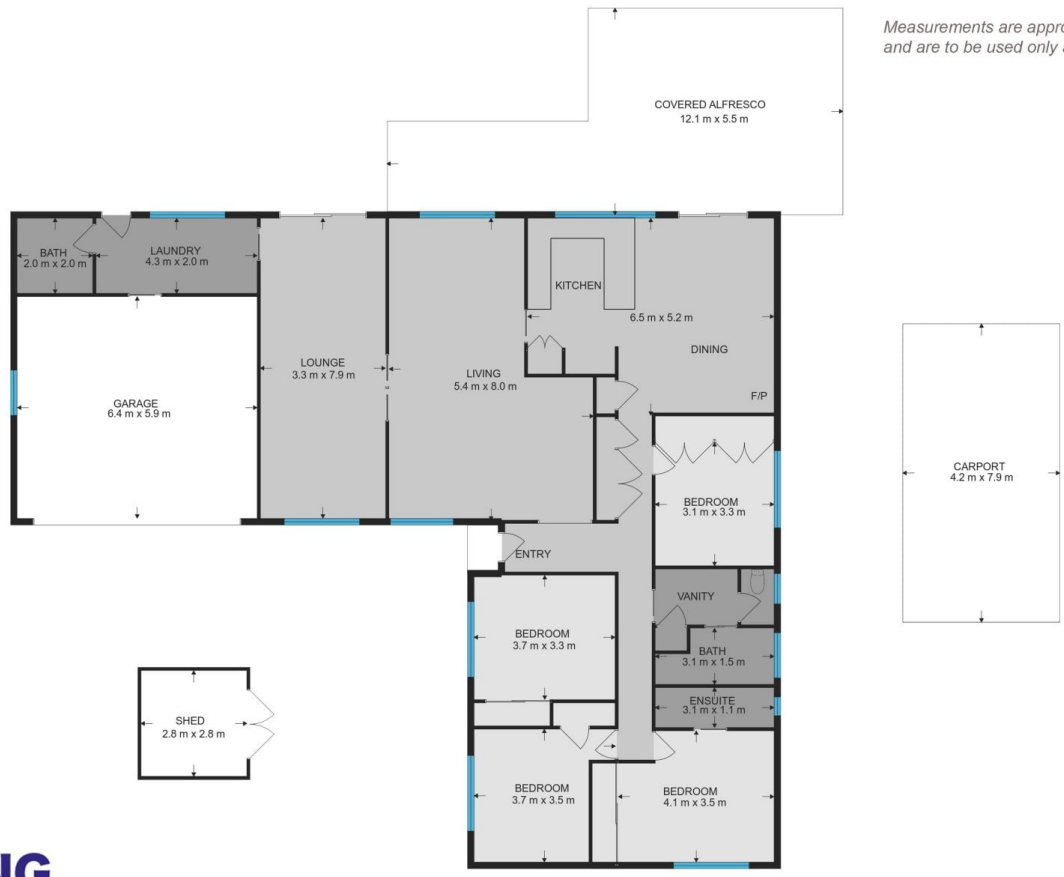
Kim Hammond
0498 990 064



Liam Higgins
0423 832 732



Measurements are approximate and are to be used only as a guide



DOWLING
PROPERTY

23 Green Slopes Drive Raymond Terrace