



## 20 Elwin Road Raymond Terrace NSW

3 1 1

Perfectly positioned in the ever-popular Lakeside Estate, this beautifully maintained 1980's brick and tile home offers comfort, convenience, and exciting future potential-all within walking distance to everyday essentials.

Enjoy the ease of living just 400m from Lakeside Shopping Village, 500m to the childcare centre, and a short 700m walk to Grahamstown Public School, with the Pacific Highway only 2.5km away for effortless commuting.

Inside, the home is light-filled and thoughtfully updated.

The renovated kitchen is a standout, featuring a stunning splashback, brushed gold handles, ample drawer storage, pantry, alongside dining area, which flows out to a covered paved entertaining space.

**Price** : \$760,000 - \$790,000

**Land Size** : 607 sqm

**View** : <https://www.dowlingterrace.com.au/sale/nsw/port-stephens/raymond-terrace/residential/house/8691564>

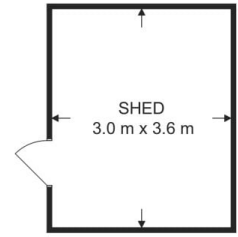
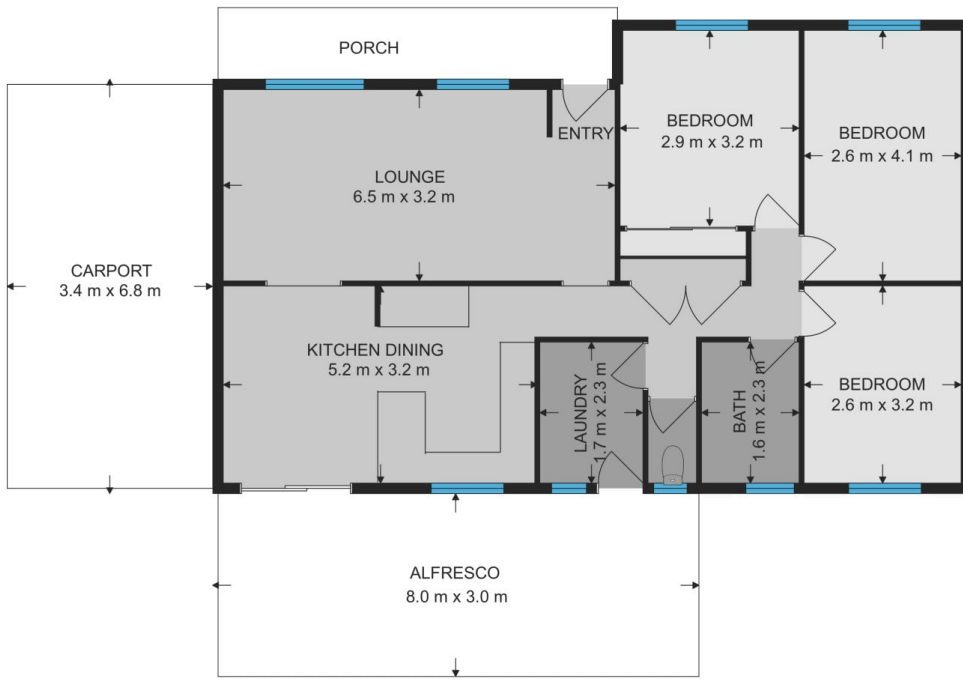


**Kim Hammond**  
0498 990 064



**Liam Higgins**  
0423 832 732

Measurements are approximate and are to be used only as a guide



Site Plan

Front



Back

**DOWLING**  
PROPERTY

20 Elwin Road Raymond Terrace